

50 YEARS



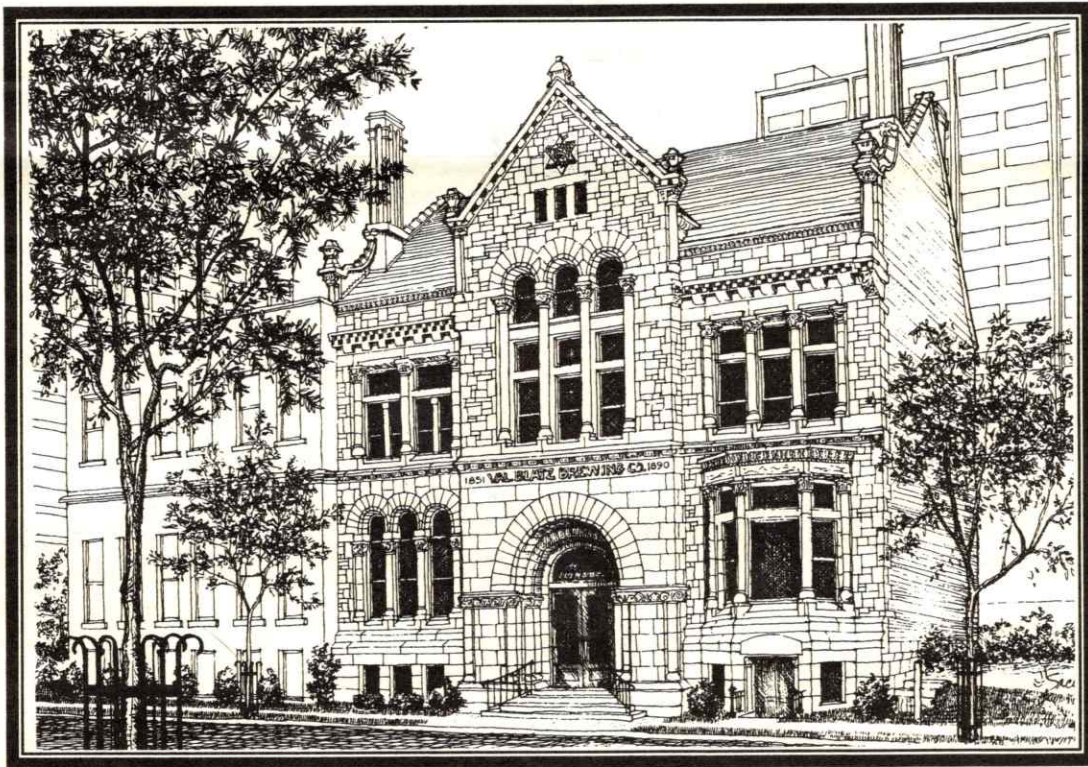
OF WISCONSIN

PERSPEKTIVEN

PERSPEKTIVEN Volume 7, No. 2

Spring 2008

Willkommen! Goethe House's New Home



**Milwaukee School of Engineering
Alumni Partnership Center**



GOETHE-
INSTITUT

PERSPEKTIVEN

Published Quarterly
by Goethe House
of Wisconsin
1120 N. Broadway
Milwaukee, WI
53202-3109

Phone (414) 276-7435

e-mail:

contact@
goethehousewis.com

Editor:

Daniel P. Hanley Jr.

Contributing Editor:

Helga Nikolic

Design:

Carl Ruppert

Partner Institute
Goethe Institut Chicago
150 N. Michigan Ave.
Chicago, IL 60601



Printed by Printfast,
West Allis

Goethe House of Wisconsin

Board of Directors

Honorable
Ted E. Wedemeyer Jr.
President

Honorable James A. Benz Vice President
Honorable Fred P. Kessler Vice President

Heiner Giese Secretary
Eileen Johannsen Treasurer

Manfred E. Beger Carol L. Bruss
Jill Haas Marvin L. Fishman, Ph.D (h.c.)
Daniel P. Hanley Jr. Lorraine Lynn Hoffmann
Dr. Sy Kreilein Jerome H. Kringel
Alexis LaJoie Dr. Ronald J. Ross
Dr. Wolfgang A. Schmidt Frank Schmitz
Rabbi Barry Silberg Dorothy M. Smaglick
Daniel Sweeney Fred J. Keller
Kathy Schlitz Pederson

Honorary Board of Directors

Gabriele A. Eschweiler
Robert Krug Harold Seemann
Leon Todd Gerhard Rauscher
Ken Pedersen Dr. William J. LaJoie

Executive Director

Katharina Hren

Academic Advisory Board

Dr. Gregory Baer, Carthage College
Dr. Albert Brugger, principal,
Milwaukee German Immersion School
Gerhardt Fischer, administrator, State Department of Public
Instruction
Dr. Herbert Flaig, Milwaukee Area Technical College
Dr. Patrick Hagen, University of Wisconsin-Platteville
Dr. Charles James, University of Wisconsin-Madison
Dr. Sylvester Kreilein, Marquette University High School
Dr. Doreen Krueger, Concordia University
Dr. Ronald J. Ross, University of Wisconsin-Milwaukee
Dr. Larry Schmedeman, Milwaukee School of Engineering
Dr. Wolfgang Schmidt
Dorothy M. Smaglick, Deutscher Sprach-und Schulverein
Rabbi Barry Silberg
Ex officio: Hon. Ted E. Wedemeyer Jr.

From the President

Ein neuer anfang.
That is right! For Goethe Haus it is a new beginning. Fifty years ago Goethe Haus began its existence in the main branch of the Milwaukee Public Library. Those were good years thanks to the unselfish assistance of many dedicated volunteers and German teaching professionals. As the years went by, due to increased space demands, the library reluctantly asked us to vacate the premises. We are grateful to the City of Milwaukee and its chief librarians for all the accommodating services they provided us throughout the years. Now it is time for the new beginning. As is clearly demonstrated by the cover of this edition of PERSPEKTIVEN and by the welcome letter of Dr. Hermann Viets, president of the Milwaukee School of Engineering, our new home is MSOE. The potential for further developing Goethe Haus' programs and enhancing the Germanic experience in Wisconsin is limited only by our own creative ability. The university setting such as provided by MSOE and its rich tradition, is the perfect milieu for such enriching activity. Success at our new home will not come easily. It will require a measure of self sacrifice by our officers, our directors, our members and good friends. Full fruition will take some time, but the rewards are beyond comprehension. Indeed it is a new beginning.

Alles Gute, Alles Goethe!

Ted E. Wedemeyer Jr.

MSOE President Viets welcomes Goethe House to campus



OFFICE OF THE PRESIDENT
HERMANN VIETS, Ph.D.

(414) 277-7100
Fax: (414) 277-7468

February 2008

Hon. Ted E. Wedemeyer, Jr.
Court of Appeals - District I
633 West Wisconsin Avenue, Suite 1400
Milwaukee, WI 53203-1918

Dear Judge Wedemeyer,

On behalf of Milwaukee School of Engineering let me welcome Goethe Haus to our campus! We are pleased to have Goethe Haus located with us in the Alumni Partnership Center. Your presence on campus is a true win-win situation. It will afford Goethe Haus great visibility and access to classrooms for language and culture instruction. The heritage of Milwaukee School of Engineering fits well with Goethe Haus' own cultural base because MSOE was established by a German immigrant 105 years ago.

Jointly working to attract students and others to our campus will benefit both organizations. A strong interaction with our German exchange students will benefit those students and improve Goethe Haus' activity base. Most of all, working with Goethe Haus, we will expand the awareness of our Exchange Programs with the Fachhochschule Lübeck among the potential participants in Wisconsin and beyond. Students in that program will kindle a relationship with MSOE and Goethe Haus that will last a lifetime.

We look forward to working together to create a strong and valuable relationship that will stand the test of time!

Best regards,

A handwritten signature in black ink, appearing to read 'Hermann', is written over a horizontal line.

Hermann Viets, Ph.D.
President

HV/jm

Goethe House starts a new volume of history

**By Katharina Hren
Executive Director**

At the beginning of December I usually start getting ready for the Christmas holidays by attending the holiday fair at German Immersion School. However, this past December was quite different, as I went to Mexico for a Goethe Institut networking conference. It was quite a challenge for me - to remember my high school Spanish while speaking German all day at the conference!

I had the distinct pleasure of meeting Gabriele Becker, the head of the Goethe Institut New York, as well as Stephan Wackwitz, head of the language department, who is also an established author in his own right. The host for the conference was the Goethe Institut Mexiko City, and there were several representatives from the German embassies and institutes in the Dominican Republic, Nicaragua, Guadalajara (Mexico), Cuba, Haiti, Costa Rica, Monterrey (Mexico).

Once again I was amazed at how well-informed Germans can be when it comes to politics and current events. The people I met knew more about details pertaining to the presidential race in our country than I did!

The topic of the conference was cultural programming, and it was quite interesting to hear about how the Goethe Institutes have developed since 1925, when they were first founded as the Deutsche Akademie.

In 2001 the Goethe Institutes merged with Inter Nationes. There are 16 Goethe Institutes in Germany itself, and there are 128 more, in 77 countries. While the Goethe Institutes are often compared with the Alliance Francaise, in the sense of serving as a cultural outpost for Germany, the sense of contemporary German identity is not as recognizable and identifiable as that of the French. This is due in part to the stigma from World War II, but it also has to do with the increasing sense of multicultural identity emerging in modern day Germany. Cultural programming available through the Goethe Institutes has an increasingly international feel that seems to almost distance itself from the German traditions cherished here in the U.S., such as those celebrated in a city steeped in German heritage, such as Milwaukee.

While my academic background was in modern German literature, art and philosophy (my first stop in any new city is the modern art museum), I think that it is

essential - and a matter of balance and poise - to honor a sense of historical underpinnings when contemplating modern German culture. I think that the Goethe House strives to act like a bridge between the old and the new, in order to make way for a modern view with a balanced perspective. What better place to forge a path that contemplates and cultivates the future with an educated sense of the past than a university environment?

We are grateful for the warm welcome we have received from the Milwaukee School of Engineering staff, especially from the amazing Dr. Hermann Viets and his equally amazing secretary Jo Miglio.

Please note that due to technical difficulties, we had to change our email address to contact@goethehousewis.com

Our telephone number and Post Office box mailing address will stay the same, and we hope to post regular office hours in April. Please check our web site at www.goethehousewis.com for updates about our hours and classes. We are planning Kinder Camps to be held at Milwaukee Kickers, as well as downtown.

We thank you for your patience and support as we begin anew with the writing of a new (unabridged!) volume of our history, one that has a healthy regard for our past and a growing enthusiasm for the unfolding future. Alles Gute, Alles Goethe, Eure Katharina

Two join Goethe House board

There are two new members of the Goethe House of Wisconsin board of directors - Kathy Schlitz Pederson and Fred J. Keller.

Pederson, of Mequon, is a Merrill Lynch financial advisor.

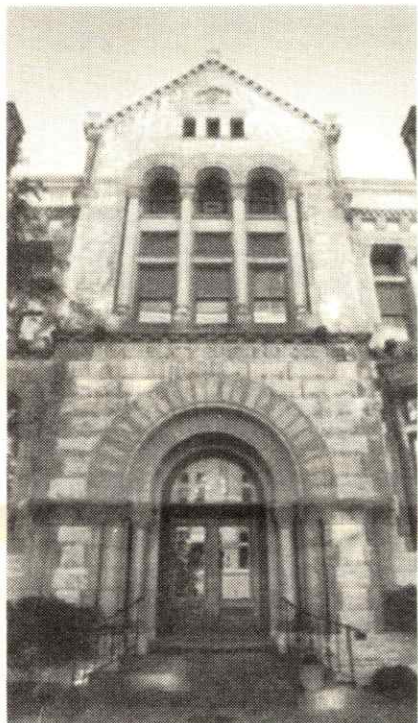
She taught German from 2003 to 2006 at Oak Creek High School and before that had taught various courses at University School of Milwaukee, Homestead High School, Mequon, and Cedarburg High School. She has been a sales executive for IBM.

Pederson has degrees from the University of Wisconsin-Madison and UW-Milwaukee.

Keller, who was born in Munich, Germany, and grew up in Milwaukee, now lives in Brookfield. He is a partner in Community Homes of Wisconsin, and has had an extensive business career throughout the U.S.

Keller has an engineering degree from Marquette University.

German heritage enriches Goethe House location



**MSOE
Alumni Partnership Center
1120 N. Broadway
Milwaukee**

Goethe House of Wisconsin's new home is in a historic building on the campus of the Milwaukee School of Engineering. There is a strong German heritage involved in Goethe House's move from the Milwaukee Public Library.

As MSOE President Herman Viets has noted, the school was established by a German immigrant 105 years ago.

The building in which Goethe House is making its headquarters, at 1120 N. Broadway, was built in 1890 by Emil and Valentin Blatz as the headquarters for the Blatz Brewing Co. business offices.

The building was added to the MSOE campus in 1989 and is the school's Alumni Partnership Center. In the 1980s the building had been refurbished as the Beer Baron restaurant.

The building is listed on the National Register of Historic Places.

Valentin Blatz was born October 1, 1826, at Miltenberg-on-the-Main, Bavaria, the son of Casper and Barbara Blatz.

In 1848, Valentin Blatz left Germany for the United States, worked in the brewing industry for a year in Buffalo, New York, and then moved to Milwaukee.

What was to become Blatz Brewing Co. had been founded in 1846 by John Braun. In 1851, Blatz married the widow of Braun and acquired his brewery which was next to one Blatz had started.

Blatz prospered and through the years he was a public-spirited and generous man, adding banking and public office to his work day.

Blatz sold to a group of London financiers in 1891. He died in 1894.



**Valentin Blatz
1826-1894**

Handprint lilies and a butterfly: Spielplatz presented by Jan Beger

Think Spring !

Create a bouquet of Handprint Lilies.
Plan an afternoon of butterfly activities.

Stelle dir vor, du wärest ein Schmetterling und tanzt in der Mitte des Kreises. Alle anderen Kinder bilden einen Kreis und halten sich an den Händen.

Zum Ende der ersten Strophe suchst du dir einen Partner und Tanzt mit ihm in der zweiten Strophe zusammen. Die anderen Kinder klatschen dazu.

Beim nächsten Durchgang stellen sich die ersten Schmetterlinge zu den Kindern in den Kreis und die Schmetterlinge in der Mitte suchen sich einen neuen Partner.

SCHMETTERLING MIT FROHEM SINN

www.zzzebra.de

Singspiel

♩ = 160

Schmet-ter - ling mit fro - hem Sinn, sucht sich ei - ne
Tra la la la la la la tra la la la

Tän - ze - rin; winkt ver - gnügt und lei - se,
la la la, tra la la la la la la,

tanz auf sei - ne Wei - se!
tra la la la la la.






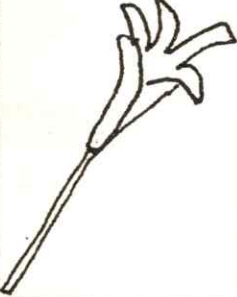

LABBE

More ideas can be found at http://www.birthdaypartyideas.com/html/butterfly_parties

Sources : zzzebra das Web-Magazin für Kinder & Enchanting Learning.com

Handprint lilies and a butterfly: Spielplatz presented by Jan Beger

HANDPRINT LILIES

	Trace a child's hand on construction paper. Cut the tracing out.	
	Curl each of the fingers around a pencil.	
	Using the palm of the handprint, form a cone (with the fingers curling outwards). Glue or tape the cone together. Staple the flower to a pipe cleaner or a drinking straw.	
	Draw some leaves on green construction paper, then cut them out.	

Wer Schmetterlinge lachen hört, weiß wie Wolken schmecken

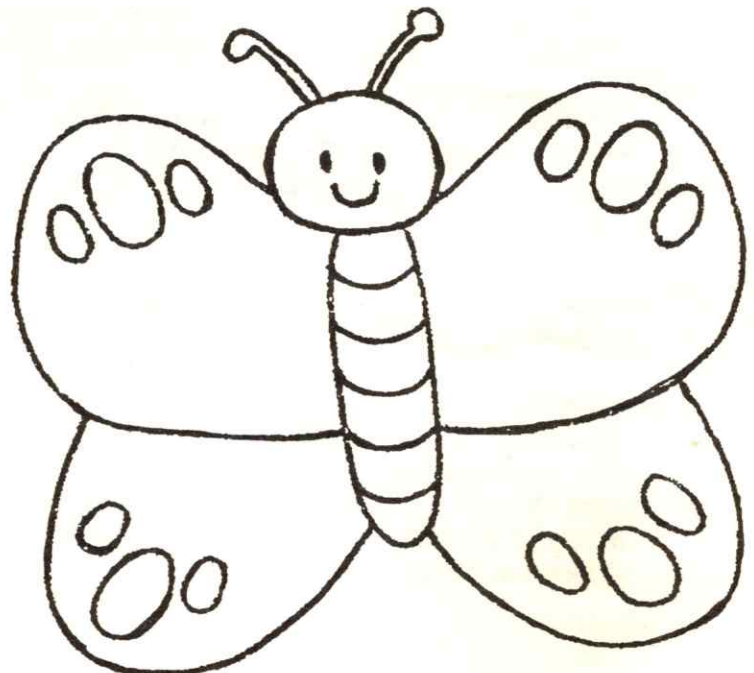
Carter Karges

How would you color the butterfly ?

Edible butterflies

Spread peanut butter on triangles cut from toast. Use a banana slice for the head & pretzel sticks for antenna.

Use a piece of celery as the body. Fill with peanut butter & stick pretzels in for the wings.





Building Bridges- Munich celebrates its 850th birthday



In 2008, Munich will be the host for a great summer of festivals: the Bavarian capital will be turning 850 and this will be celebrated extensively.

For a European city, 850 years is not really very old. What is astonishing, however, is that the town was able to evolve from a monastery to an attractive hub of culture and high-tech of European proportions. Over time, Munich has maintained its flair as a city with much joie de vivre, and it has consistently been open to the avant-garde and progress.

The motto of the birthday is "Building Bridges" and it aims to connect the founding of the city with today's lively, colorful and yet tradition-oriented urban culture.

Munich's foundation goes back to Henry the Lion, who, in 1158, destroyed the Isar bridge on the old salt road, which lay somewhat to the north at the time. He then built a new bridge near "Munichen." The city received market and minting rights in this context, which set the cornerstone for undreamt of growth into a city of over a million inhabitants.

Munich likes to celebrate. For its 850th birthday, it will enjoy three major events:

■ June 14-15, 2008 City foundation festival:

The cultural program of this annual citizen's festival in the inner city will be expanded to suit the occasion.

■ July 19-20, 2008 Old Town Ring Road festival:

A theatrical, musical and playful journey in time on

the Old Town Ring Road

■ August 1-3, 2008 Isar Bridge festival:

A romantic festival on the bridge with a light installation, music under the bridge, dancing on the riverbanks, reflections on the water.

Throughout the summer, especially on weekends, visitors can enjoy theater, cabaret, concerts, exhibitions, lectures, tours, information markets and lots more in the city's various districts. The events will be created and presented by a wide range of associations, initiatives, institution and artists.

- muenchen.de



Goethe Words of Wisdom

In German
Welche Regierung die beste sei?
Diejenige, die uns lehrt, uns selbst
zu regieren.

In English
Which government is the best?
The one that teaches us to govern
ourselves.


Johann Wolfgang von Goethe

Brockhaus Encyclopedia Goes Online

It's the paper death of a German classic

The German publisher Brockhaus has been printing its encyclopedias for nearly 200 years, and anyone who's had the money has boasted a collection of the handsome works on their bookshelves for all the world to admire.

But the Internet has been a thorn in Brockhaus' side years now, forcing the company to reevaluate its strategy. The German version of the democratic digital reference work Wikipedia has been seen as cutting into Brockhaus' profits.

"Though official figures are not yet out for 2007, we can expect losses of around several million euros," a Brockhaus spokesperson said.

The publisher's management is reviewing ways to reduce costs, which could also include slashing around 50 jobs at the Mannheim office. Brockhaus employs nearly 450 people nationwide, around 250 of whom are in Mannheim.

Brockhaus is planning to launch its free encyclopedic portal in mid-April, Alexander Bob Brodthaus, head of the with the publishing company, said, banking on its soundly researched information to set itself apart from Wikipedia, which can be edited by all Internet users.

"Brockhaus Online will provide relevant, reviewed information from all fields of knowledge," a press statement said.

The Brockhaus branch in Leipzig, which includes about 60 employees, was transformed into a purely online editorial office last year.

Brockhaus said it would fund its new Internet product through advertising. The company also intends to create an online service for schools that will be free of advertising.

"Market analysis clearly show that customers will research specific information on the Internet more and more in the future," the Brockhaus spokesperson said.

The 21st edition of the Brockhaus encyclopedia was likely the last in printed form. "Now, everything will happen online," the spokesperson said.

"But, we will clearly distinguish ourselves from providers like Wikipedia, by banking on



Brockhaus Viewpoint

The Internet has been a thorn in Brockhaus' side years now, forcing the

company to

reevaluate its strategy.

The German version of the democratic digital reference work Wikipedia has been seen as cutting into Brockhaus' profits.

"But, we will clearly distinguish ourselves from providers like Wikipedia, by banking on Brockhaus' relevance, accuracy and reliability," a Brockhaus spokesperson said. "And, our information cannot be manipulated."

Brockhaus' relevance, accuracy and reliability," the spokesperson said. "And, our information cannot be manipulated."

The online reference work Wikipedia was established in 2001, with the aim of having Internet users themselves create the encyclopedia's content. The Web site's democratic nature has made some of its entries on contested subjects prone to manipulation. Several studies have, however, shown that Wikipedia's error rates are on par with those of major encyclopedias.

Millions of people around the world use the service. According to Wikipedia, 10,000 people regularly write entries in Germany alone.

- Deutsche Welle



Goethe Prize of Frankfurt awarded to Pina Bausch



Pina Bausch

The 2008 Goethe Prize of Frankfurt am Main has been awarded this year to the choreographer Pina Bausch.

It is the first time a prominent representative of international dance has been given the prestigious honour, which is endowed with a purse of 50,000 Euro. Bausch is the third woman to have received the Goethe Prize since 1945, following the writers Annette Kolb (1955) and Wislawa Szymborska (1991).

The Board of Trustees has announced that she will receive the award on August 28 at a ceremony in St. Paul's Church in Frankfurt. The Prize, named after Frankfurt's most famous son, is given every three years on the anniversary of Goethe's birthday.

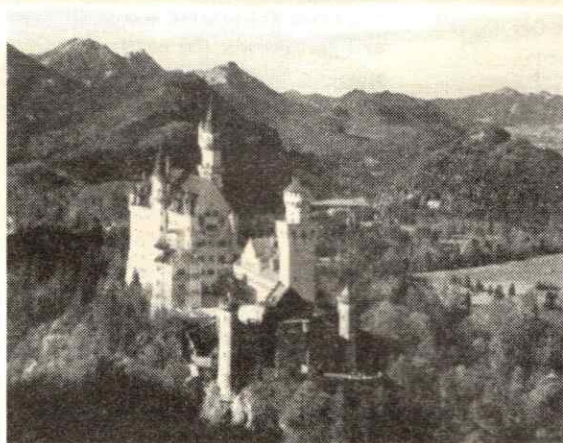
For over twenty-five years, Pina Bausch, with her Wuppertal Ensemble, has been regarded as the most important champion of German ballet abroad. In keeping with her motto ("I am interested not in how people move, but in what moves people"), she has repeatedly crossed boundaries.

The sixty-six year-old artist has blazed new paths in dance theatre, said the Board of Trustees in their laudation on the laureate. At the same time, Bausch has also always grappled with other arts.

The city of Frankfurt has awarded the Prize since 1927. Among the first laureates were Albert Schweitzer and Sigmund Freud. After 1949, the year in which the Prize was awarded to Thomas Mann, it has been given only every three years.

A German destination

Schloss Neuschwanstein



King Ludwig II's fairy-tale castle, is the most visited castle in Bavaria - one of Germany's most famous tourist destinations. How many times has the castle in the gingerbread style of the 19th century Romantic historicism been photographed? No one can say. But we do know that the unfortunate Bavarian king only lived at the castle for 172 days. Incidentally, he was totally against the public ever gaining access. Nevertheless, Schloss Neuschwanstein was opened to visitors just six weeks after his death. Now up to 5,000 visitors come - every day.

-Deutschland



Germans search for best immigrated word

While lovers of the German language have long bemoaned a seeping infiltration of mainly English words, a search is on to find the most beautiful word with a migrant history.

With some 100,000 "immigrants" among Germany's 300,000 to 500,000 words, officials at the country's Goethe Institute and the German Language Council felt that it was high time to search for the most beautiful addition to the language.

"Our language is full of loans from all over the world," reads a statement on the official Web site of the competition to find the best immigrated word or phrase in German. "If they're better than native words, they won't be given back after a while."

About 2,000 suggestions have already been sent in by people hoping to win the grand prize – a trip to the native country of the word they suggested.

A jury will pick the winner.

After all, Bier (beer) has a Latin origin - and what would the Germans do without it?

Exotic candidates are in the running: there's the Aztec *Tomate* (tomato), the Arab *Tarif* (tariff) and the Yiddish *Schlamasse* (mess).

Still, English words clearly dominate the current wave of immigration, causing many Germans to complain about the often unnecessary neglect of perfectly acceptable native words.

Newcomers such as "corporate identity," "workflow" and "afterwork-party" are particularly prevalent among the business crowd while creations such as "handy" (cell phone) that don't even exist in English show that things may have gone a bit too far.

But German would hardly be able to keep up without foreign injections from time to time.

"Making do without foreign words would not be possible and severely curtail the language," Anita Boomgarden of the Goethe Institute told a German news service.

After all, *Bier* (beer) has a Latin origin – and what would the Germans do without

German star chef creates special space menu for astronauts

Tired of bland canned and vacuum-packed food, astronauts aboard the International Space Station will get some gourmet grub in the future – veal and a plum compote whipped up by a star German chef from the Black Forest.

Harald Wohlfahrt, one of Germany's most eminent chefs, is used to clients from all over the globe flocking to his gourmet temple in the Black Forest. But even this seasoned chef and recipient of three stars by the Michelin restaurant guides to Europe was probably not prepared for his latest cooking contract -- it came all the way from space. Wohlfahrt's fancy "Schwarzwaldstube" restaurant in Baiersbrunn in the western state of Baden-Wuerttemberg is to provide meals for astronauts aboard the International Space Station (ISS) starting next year.

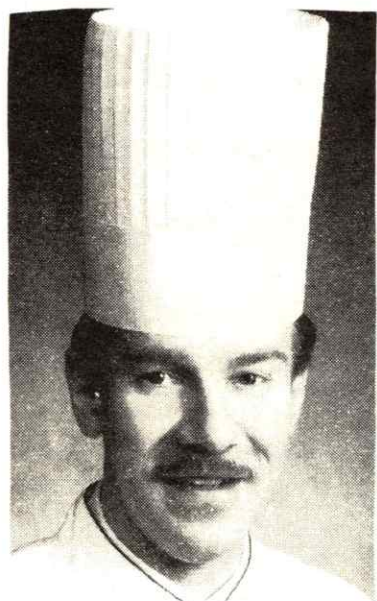
The European Space Agency (ESA), co-owner of the orbiting laboratory complex, said the ISS astronauts had so far been nourishing themselves on Russian and American nosh. Good food doesn't just keep the crew fit but also improves their motivation, the ESA said.

The astronauts had requested stronger flavors and more soups and meat dishes because life on the sterile space station diminished the sense of smell and taste.

Wohlfahrt has concocted a special space menu. For starters, there's a potato soup with chunks of black pudding followed by filet of veal and vegetables in a balsamic vinegar sauce, accompanied by a puree of white beans. The delectable-sounding meal is rounded by a compote of Black Forest plums with an aniseed sauce for dessert.

Alas, the region's famous wines won't make it on to the menu since alcohol is banned on the ISS.

A spring dessert from Chef Josef's oven



Chef Josef N. Zimmermann
Milwaukee Athletic Club

Teutoburger Easter Egg liquor "Guglhupf"

Ingredients

- 5 Eggs
- 200 gr. Sugar
- Pinch Salt
- 1/8 liter Flax Seed kernel oil
- 1/4 Liter Eierliquor
- 100 gr. Ground Almonds
- 1 Tablespoon Lemon Juice
- 1/4 tsp. almond extract
- 125 gr. Wheat flour
- 125 gr. Wheat Strength
- 1 Tablespoon Baking powder



Foto: Teutoburger Ölmühle/WirthsPR

4 Tablespoon Poudersugar for Garnish

Procedure:

Combine Eggs, Sugar, Salt and flaxseed Oil and whisk until smooth. Approximately 1-2 minutes. Mix sifted Wheat Flour, Wheat Strength and Baking powder and all remaining Ingredients Under Egg mixture.

Put mixture in sprayed Guglhupf form

Bake for 40 – 45 minutes at 350 F degrees

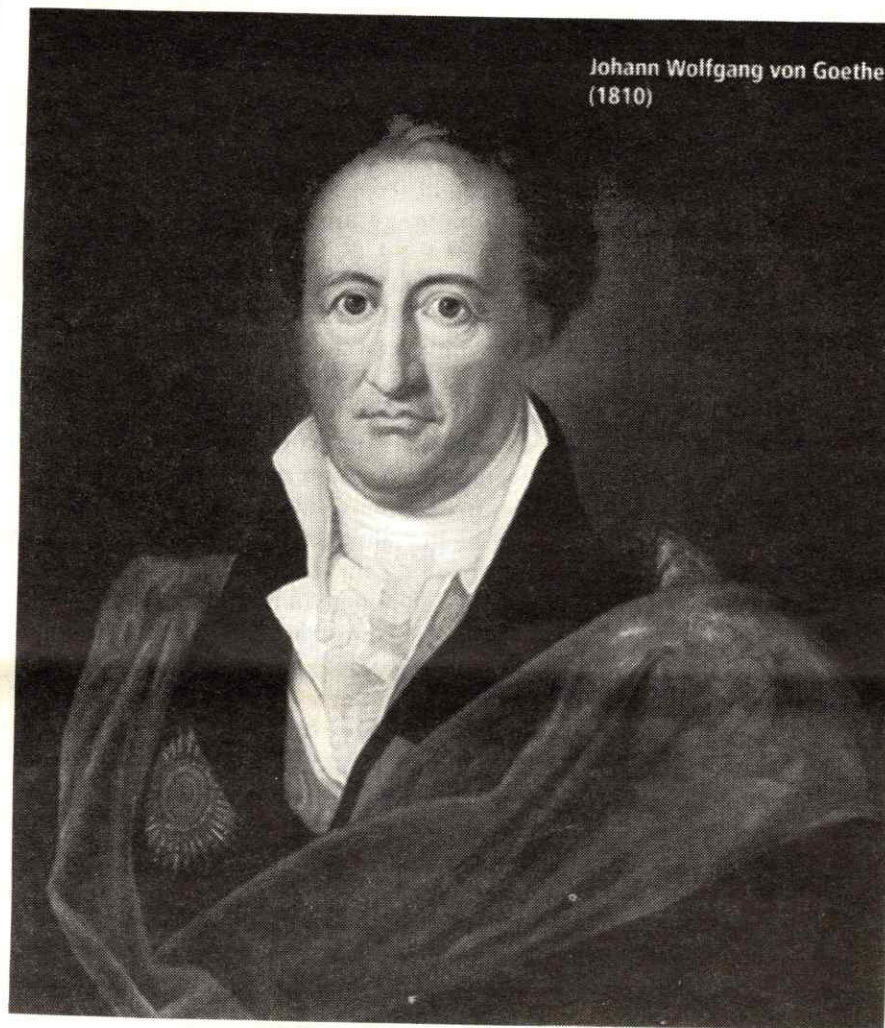
Happy Easter Feast
Chef Josef

Retracing the classics in Weimar



Weimar is small. It lies in the green heartland of Germany, in Thuringia, and has just about 65,000 inhabitants. Yet it still enjoys world fame as a city of literature, art, music and history. It was founded by many great minds, above all by the writers Johann Wolfgang von Goethe and Friedrich Schiller, who lived and worked in Weimar for many years. But Lucas Cranach also belongs among their ranks, the artist of the Reformation, and the great reformer Martin Luther, who often preached in Weimar; Johann Sebastian Bach, the most widely played composer, and Franz Liszt, who led Weimar in the post-classical era into a "silver" age of music. They all walked along the historical cobble stones of the

market place, past the stands of the brightly colored vegetable market that still exists today. Nowadays, it's not just the city inhabitants but also numerous tourists who saunter and mingle there. Almost all of the visitors have a common goal: about 500 steps away lies the Goethe House, the city's holiest of literary sanctuaries. Nobody needs a taxi in Weimar. Everything can be reached easily on foot. But if you really want to gain a feel of the time around 1800, then the best thing to do is ride in one of the many horse-drawn carriages. Young Herr Goethe may well have found the place small and confined when he arrived in the royal seat of residence in 1775. He was, after all, born in Frankfurt. He came at the invitation of the equally young, art-loving Duke Carl August, who became Goethe's friend by both challenging and supporting him. And Johann Wolfgang von Goethe remained over 50 years until the end of his life in the little Thuringian town. He found peace and strength there, as well as the material prosperity he needed to cultivate his creative genius. Goethe's house overlooks the Frauenplan and is Weimar's most visited museum.



Johann Wolfgang von Goethe
(1810)

GERMAN LIFE

-Deutschland

Goethe House of Wisconsin

We like to thank our friends who have generously supported us.

Ein herzliches Dankeschön
Ted E. Wedemeyer Jr.

Goethe House Wisconsin
Membership

June 2007

Kowol Family, \$50; S. Francele Sherburne, \$20; Dr. A. Jerofke, \$20.

July 2007

S. Diane Drufenbrock, \$20; LaJoie Family, \$50; Erika Guth-Degner, \$20; Fritz Keller, \$20.

August 2007

Heinrich Villing, \$20; SVEV Oberlander, \$50; Theresa Gommermann, \$20; Robert C. Munnecke, \$20; Ilse Charleston, \$20; Rita Stenicka, \$20.

October 2007

Susie Wedemeyer, \$200; Ted Wedemeyer, \$1000; Lorraine Hoffmann, \$100; Eileen Johannsen, \$100; James Benz, \$100; Beger Family, \$50; Ingolf Rixmann, \$20; Hayes Family, \$50; Breitenfeld Family, \$50; Ortiz Family, \$50.

December 2007

Sponsor PERSPEKTIVEN

Sponsorships are available for a minimum of \$100.

We welcome business, family and individual sponsorships. Help tell the story of contributions of German-speaking immigrants to the United States of America, particularly Wisconsin.

**Write or call:
Goethe House Wisconsin
1120 N. Broadway,
Milwaukee, WI 53202
(414) 276-7435**

Gudrun Miller, \$20; Erna Schatzman, \$20; Fred Kessler, \$200; Sy Kreilein/Joan Parsley, \$250; Kathy Pedersen, \$25; Erika Guth-Degner, \$20; Gisela Kremer, \$20; John Cesarz Kaiser, \$25; Hanna Bruenn, \$25; Wolfgram Family, \$50; Goelzer Family, \$50; Matusinec Family, \$100; Helga Nikolic, \$20; LeRoy Boehlke, \$20; Josef Zimmermann, \$20; Jill Haas, \$100.

January 2008

Richard Kent, \$25; Club der Pommern, \$50; Alfred Keller, \$25; City of Milw/Serials Sect., \$25; Dieter Buschmann, \$20; Hannelore/Benno Treu, \$40; Detlef Moore, \$100; Robert Luening, \$25;

James Klauser, \$250; Robert Kalupa, \$20; Joan Luetzow, \$40; Marvin Fishman, \$250; Inge Wintersberger, \$20; Dan Hanley, \$20; S. Diane Drufenbrock, \$20; Stephen Arnhold Family, \$50; George Breu CPA, \$25; Stephanie Richards-Wilson, \$25.

February 2008

Ilse Charleston, \$20; Robert/Lou Ann Rogowski, \$50; David/Maria Luce, \$40; Else Ankel, \$20; Paul Ahrens, \$25; Larry/Niketa Schmedeman, \$100; F.W. Mueller, \$50; LaJoie Family, \$50; Fritz Keller, \$20;

Peter Cuje, \$20; A. Bela Maroti, \$20; Ruth Hartman, \$20; Sara/Dan Grunwaldt, \$50; G.E.O. Widera, \$20; Andrew Richardson Family, \$50; Carl Backus, \$20; Diane Baughn, \$25; Herman/Patricia Delmenhorst, \$50; Karl Pintar, \$20; Marilyn John, \$20; Penny Janz, \$20; John/Carolyn Geason, \$50;

William Hentzen Sr., \$25; Michelle Nielsen, \$20; Casterline Family, \$50; Kowol Family, \$50; Christiane Grauert, \$25; Milwaukee Liederkrantz, \$50; Carl Schurz Memorial Park, \$50; LeRoy Boehlke, \$20; Dank Milwaukee, \$100; Kenneth Lukow, \$20; Albert Brugger, \$50; Bridget Johannsen Moen, \$20; Sinikka Church, \$20; Jan Fischer, \$20; Kathy O'Sullivan, \$20; Gunnar Prawitz, \$20; Heiner Giese, \$100.

Goethe House of Wisconsin

Please clip this membership form and send to Goethe House Wisconsin at:
1120 N. Broadway, Milwaukee, WI 53202-3109

Date:.....
Name:.....
Address:.....City.....State.....Zip Code.....
Telephone.....E-mail address.....

Signature.....

Application for: (Check one) ☐ New membership ☐ Membership renewal

Goethe House Friends:

☐ Life membership (\$1,000)
☐ Patron (\$500)
☐ Benefactor (\$250)
☐ Friend of Goethe (\$100)

General Membership (Annually):

☐ Family membership (\$50)
☐ Association membership (\$50)
☐ Individual membership (\$25)
☐ Educator Membership (\$20)
☐ Senior membership (\$20)
☐ Student membership (\$20)

Please make checks payable to **Goethe House of Wisconsin**

Goethe House of Wisconsin is a non-profit German-American cultural institute serving Wisconsin since 1958. Our mission is to serve as a statewide resource for information about the past and present culture of all German-speaking people - especially those in the Federal Republic of Germany. Goethe House of Wisconsin invites the financial support of individuals, companies and organizations who share our mission and recognize the value of this important cultural exchange. Goethe House of Wisconsin is a not-for-profit (501) (c) (3) organization. Donations are tax deductible as the law allows.

LEAVE A
GERMAN LEGACY

invite you to join in making a bequest to Goethe House in order to guarantee its success and service to future generations.

For more information on supporting Goethe House through your estate plan, contact:
Katharina Hren
(414) 276-7435